



DOGWOOD AT OBERLIN PRESERVE

4 BEDS | 3.5 BATHS

Total Living Area: 4,475 sqft

Heated: 3,125 sqft

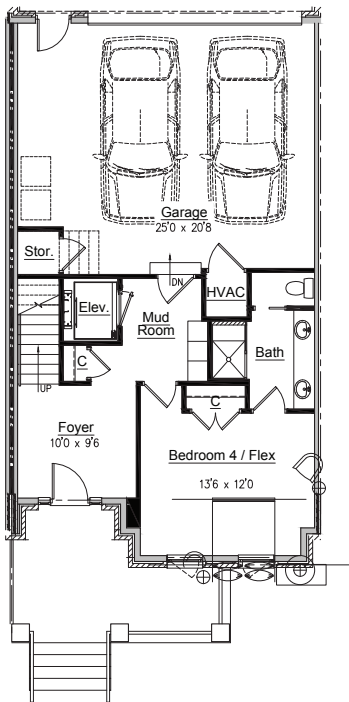
Unheated: 645 sqft

Porches: 280 sqft

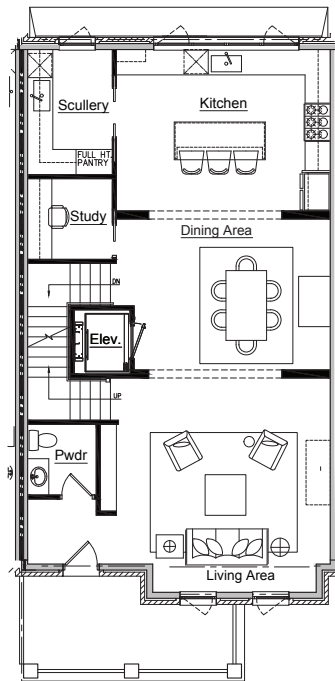
Rooftop Terrace: 425 sqft

DOGWOOD - 2313 GRANT AVENUE

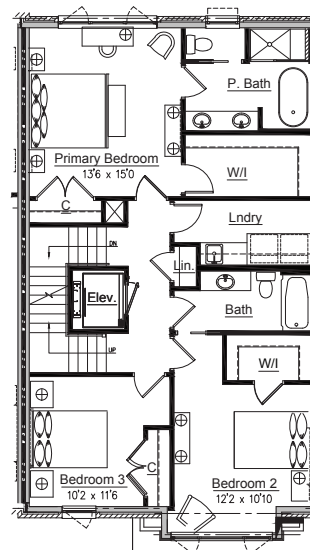
First Floor



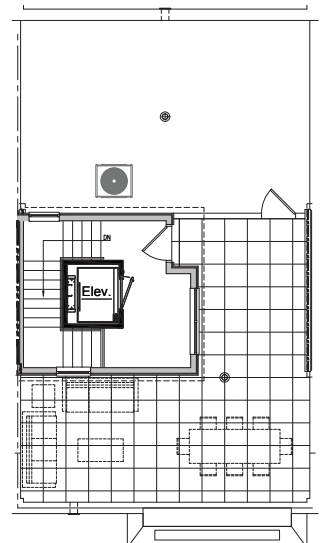
Second Floor



Third Floor



Roof Level



FRONT ELEVATION



OBERLIN
PRESERVE

1341 Chester Road, Raleigh, NC | Phone: (984) 646-0640

Email: info@oberlinpreserve.com | oberlinpreserve.com

*Floorplans are for illustrative purposes only. Representations are not guaranteed to be drawn to scale, and architectural details or features may be subject to variation.