



## DOGWOOD AT OBERLIN PRESERVE

4 BEDS | 3.5 BATHS

Total Living Area: 4,540 sqft

Heated: 3,195 sqft

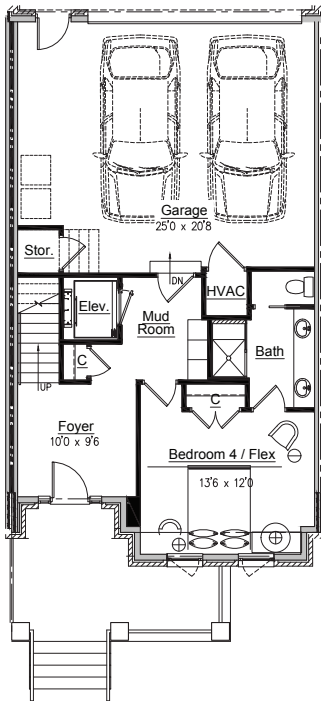
Unheated: 640 sqft

Porches: 280 sqft

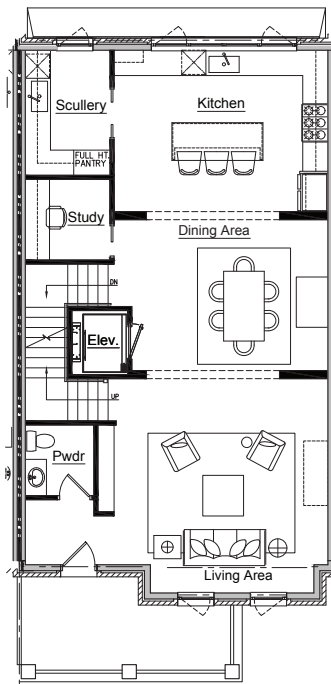
Rooftop Terrace: 425 sqft

## DOGWOOD - 2311 GRANT AVENUE

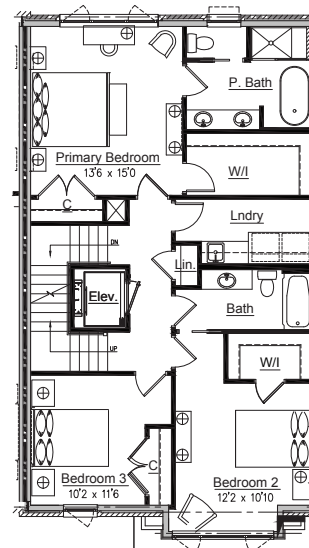
First Floor



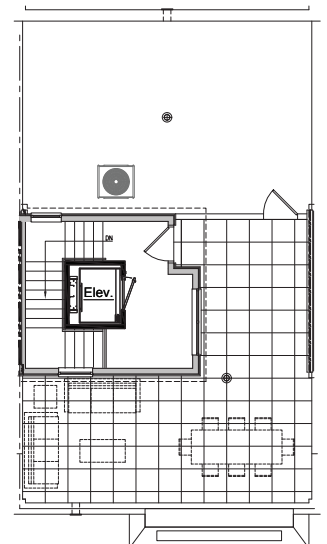
Second Floor



Third Floor



Roof Level



FRONT ELEVATION



OBERLIN  
PRESERVE

1341 Chester Road, Raleigh, NC | Phone: (984) 646-0640  
Email: [info@oberlinpreserve.com](mailto:info@oberlinpreserve.com) | [oberlinpreserve.com](http://oberlinpreserve.com)

\*Floorplans are for illustrative purposes only. Representations are not guaranteed to be drawn to scale, and architectural details or features may be subject to variation.